

Rainier Beach Townhomes

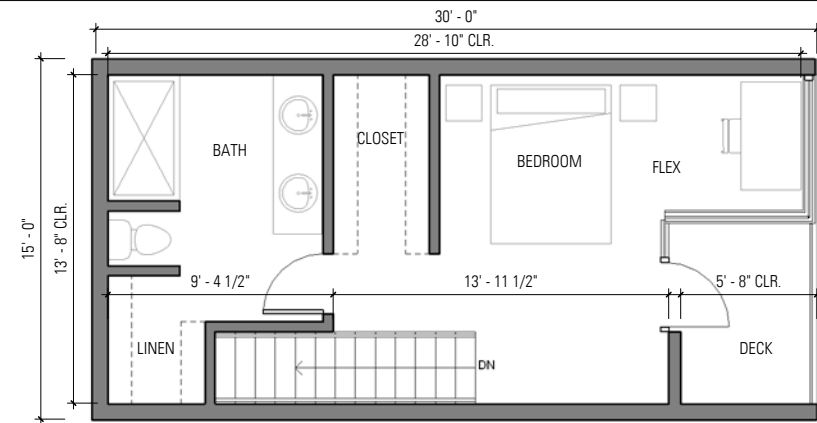
9031 Valdez Avenue South
Seattle, WA 98118

08 February 2008 - Issued for MUP

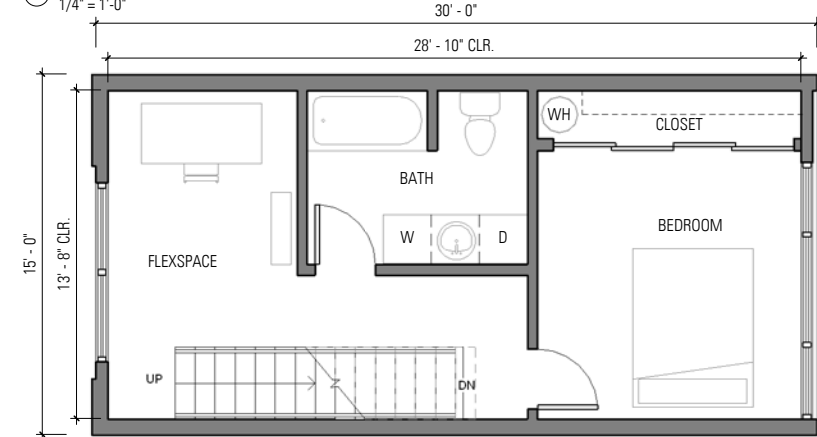
Project Number 0705
Author: IW, SS, PH
Checker: MM

Unit Plans

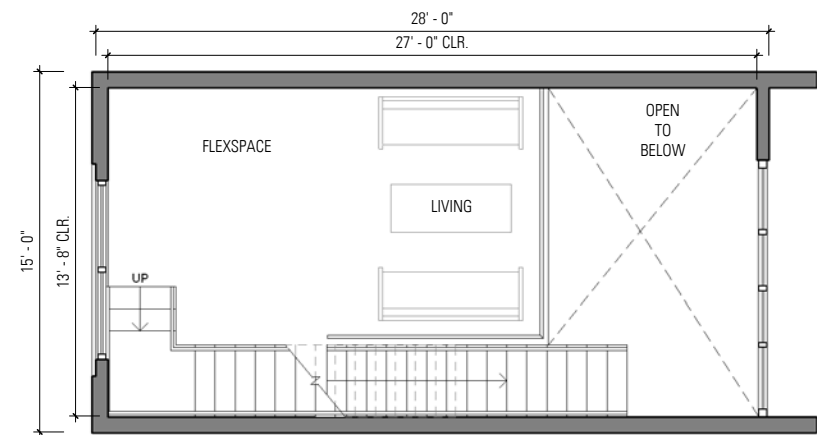
A401



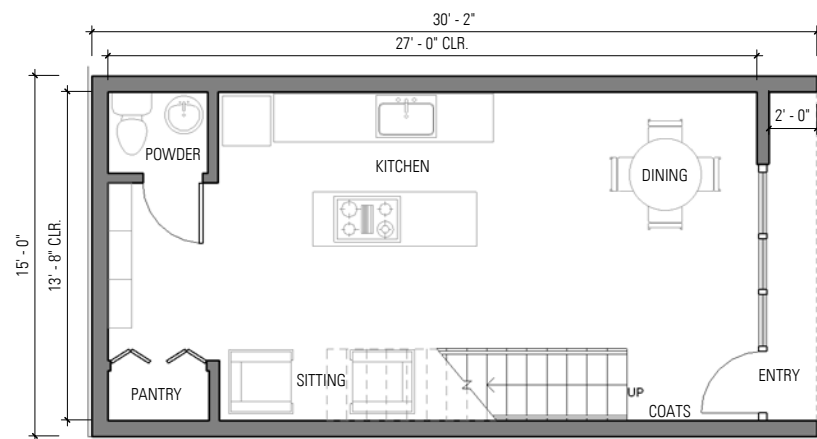
Ⓛ02 Unit Plan - Unit A Level 4, Typ.
1/4" = 1'-0"



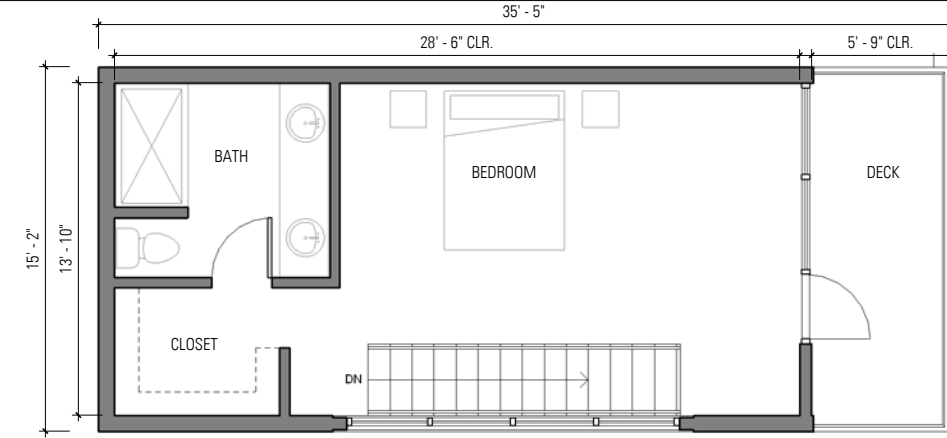
Ⓛ02 Unit Plan - Unit A Level 3, Typ.
1/4" = 1'-0"



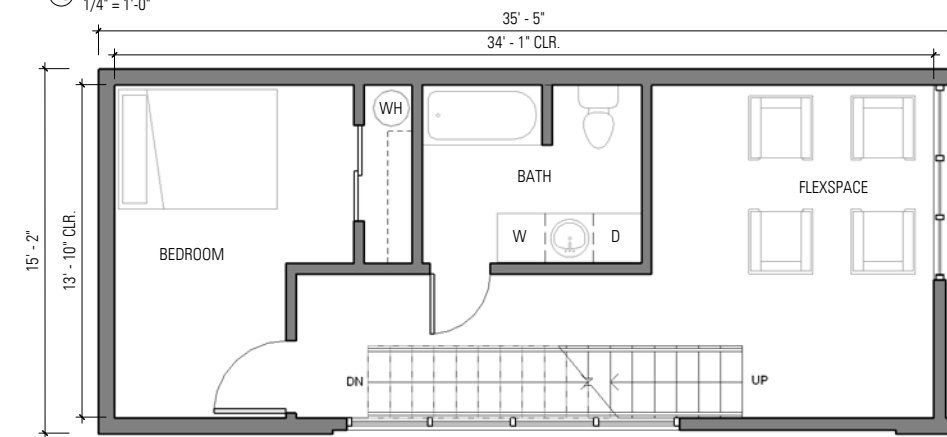
Ⓛ02 Unit A Level 2, Typ.
1/4" = 1'-0"



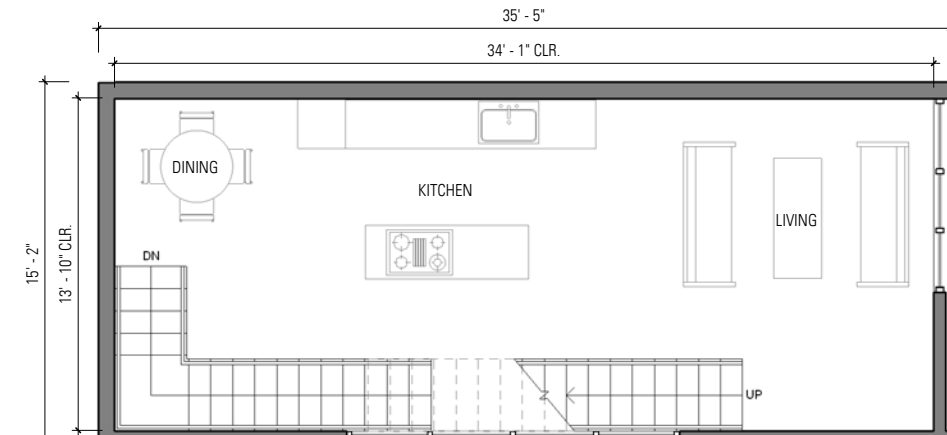
Ⓛ01 Unit Plan - Units A Level 1, Typ.
1/4" = 1'-0"



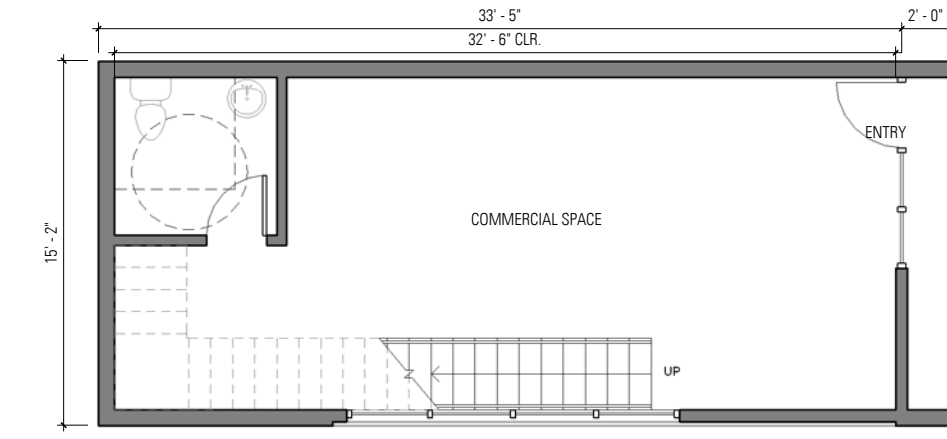
Ⓛ05 Unit Plan - Unit B1 Level 4
1/4" = 1'-0"



Ⓛ05 Unit Plan - Units B1 and B2 Level 3, Typ.
1/4" = 1'-0"



Ⓛ05 Unit Plan - Units B1 and B2 Level 2, Typ.
1/4" = 1'-0"



Ⓛ05 Unit Plan - Units B1 and B2 Level 1, Typ.
1/4" = 1'-0"

architect
Schemata Workshop, Inc.
CONTACT: Mike Mariano, AIA
v (206) 285-1589

owner
Station Condos LLC
CONTACT: Steve Fast
v (206) 725-3023

geotechnical
Soil & Environmental
Engineers, Inc.
CONTACT: C.J. Shin
v (425) 868-5868

civil
LPD Engineering
CONTACT: Laurie Pfarr
v (206) 725-1211

landscape
Susan Black & Associates
CONTACT: Michael Lamb
v (503) 789-2133

Rainier Beach Townhomes

9031 Valdez Avenue South
Seattle, WA 98118

08 February 2008 - Issued for MUP

Project Number 0705
Author: IW, SS, PH
Checker: MM

Unit Plans

A402

